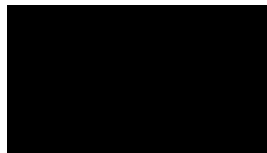


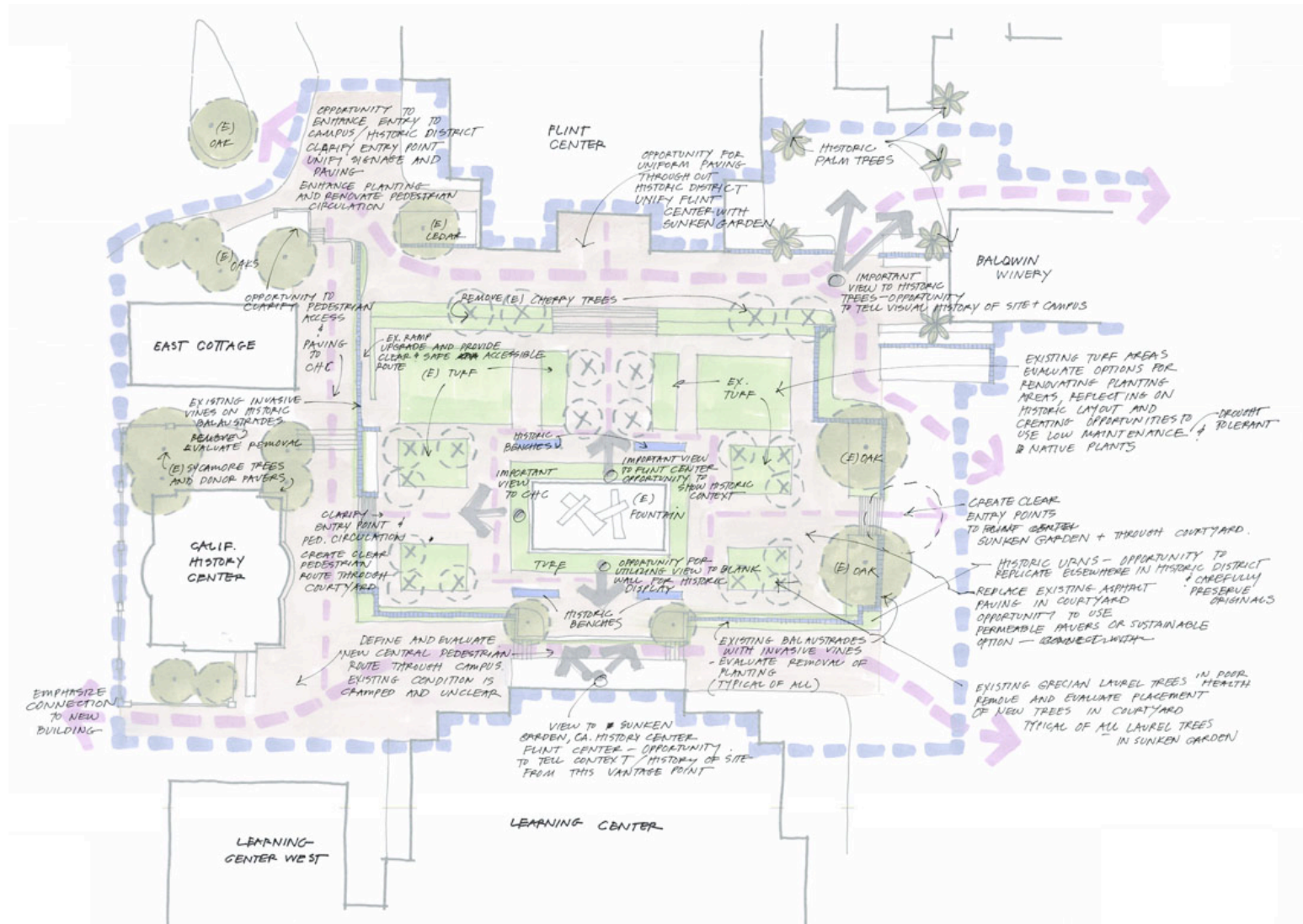
SUNKEN GARDEN
DE ANZA COLLEGE
CUPERTINO, CALIFORNIA



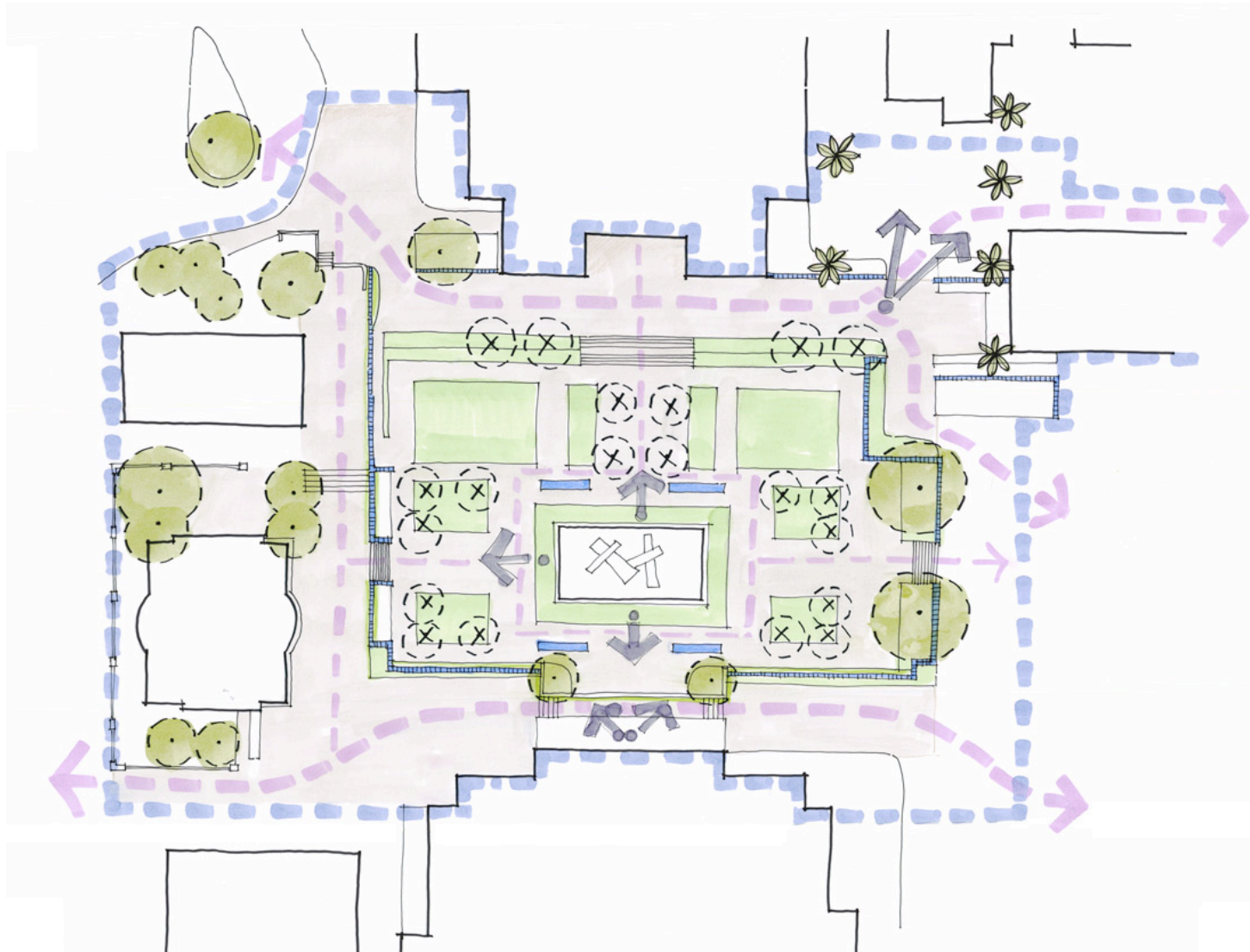
PRESENTED TO:
DE ANZA COLLEGE HISTORIC REVIEW COMMITTEE
MARCH 1, 2011



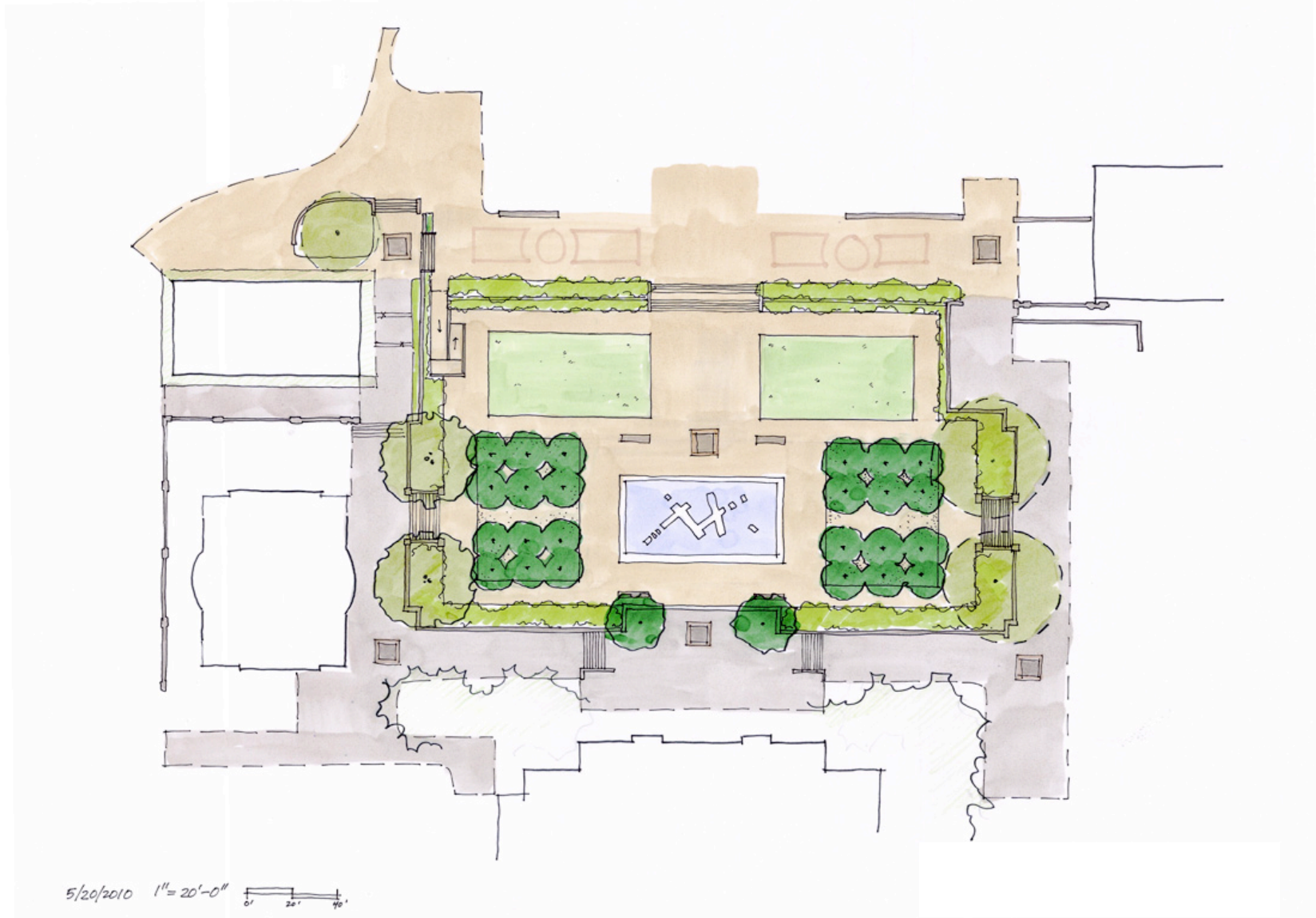
SITE CONTEXT & ANALYSIS



SITE CIRCULATION - EXISTING CONDITIONS



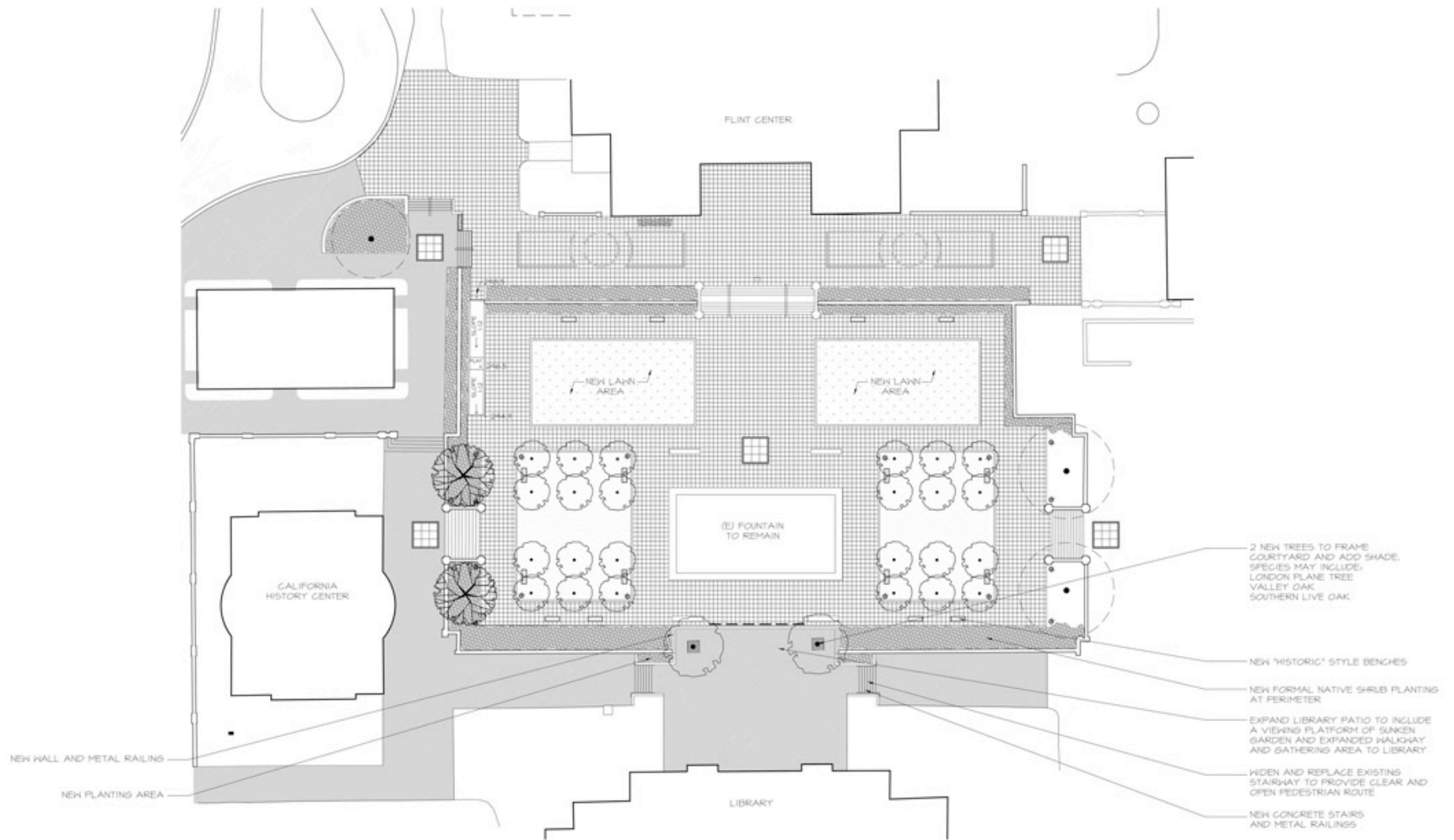
SITE CONCEPT DESIGN



SUNKEN GARDEN - DE ANZA COLLEGE

HISTORIC REVIEW COMMITTEE
MARCH 1, 2011

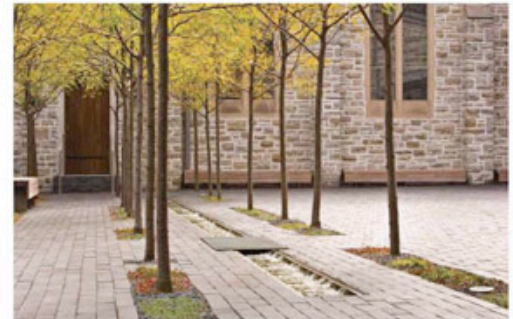
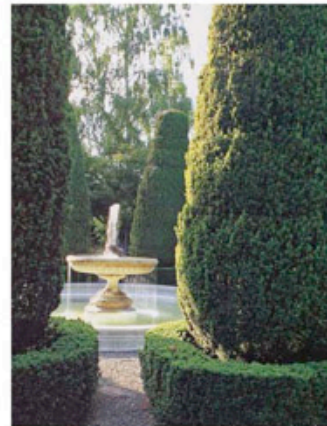
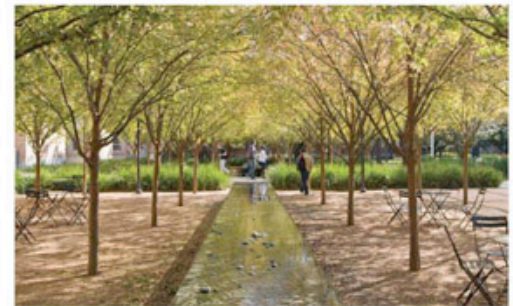
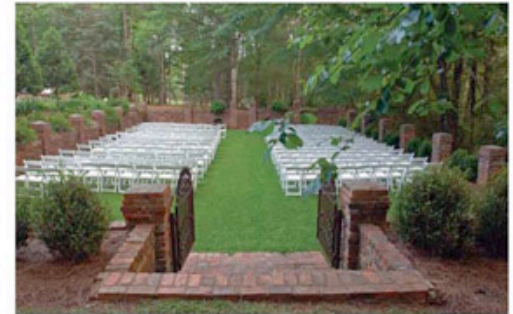
FINAL CONCEPT PLAN





PLANTING CONCEPTS FOR FORMAL GARDEN:

- Large, open, reflective spaces - gravel & grass fields
- Fountain focal point
- Strong axis with framed views at either end
- Simple minimalistic plantings to serve as backdrop to architecture and site
- Orchard element



FORMAL NATIVE GARDEN



Heuchera maxima - Alum Root



Rhus integrifolia - Lemonade Berry



Galvezia speciosa 'Firecracker' - Island Snapdragon



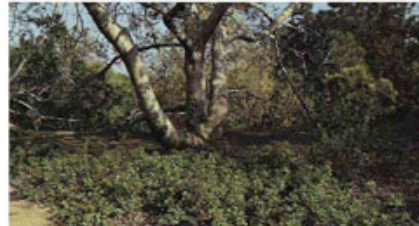
Gaultheria shallon - Salal



Festuca ovina glauca - Blue Fescue



Calycanthus occidentalis - Spice Bush



Ribes viburnifolium - Evergreen Currant



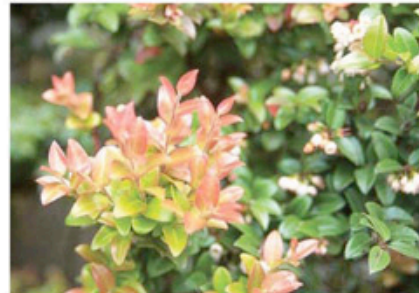
Rhamnus californica 'Mound San Bruno'



Salvia leucantha - Salvia



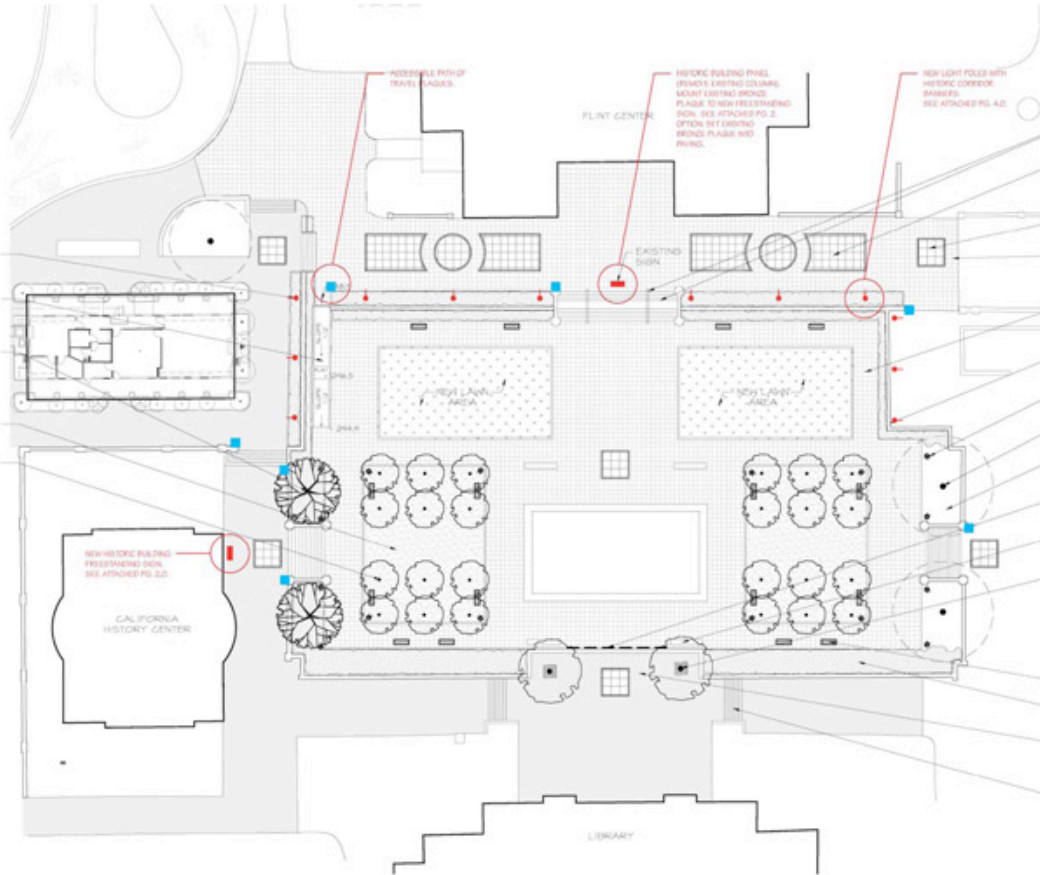
Salvia 'Bee's Bliss'



Vaccinium ovatum - Huckleberry



Carpenteria californica - Bush Anemone



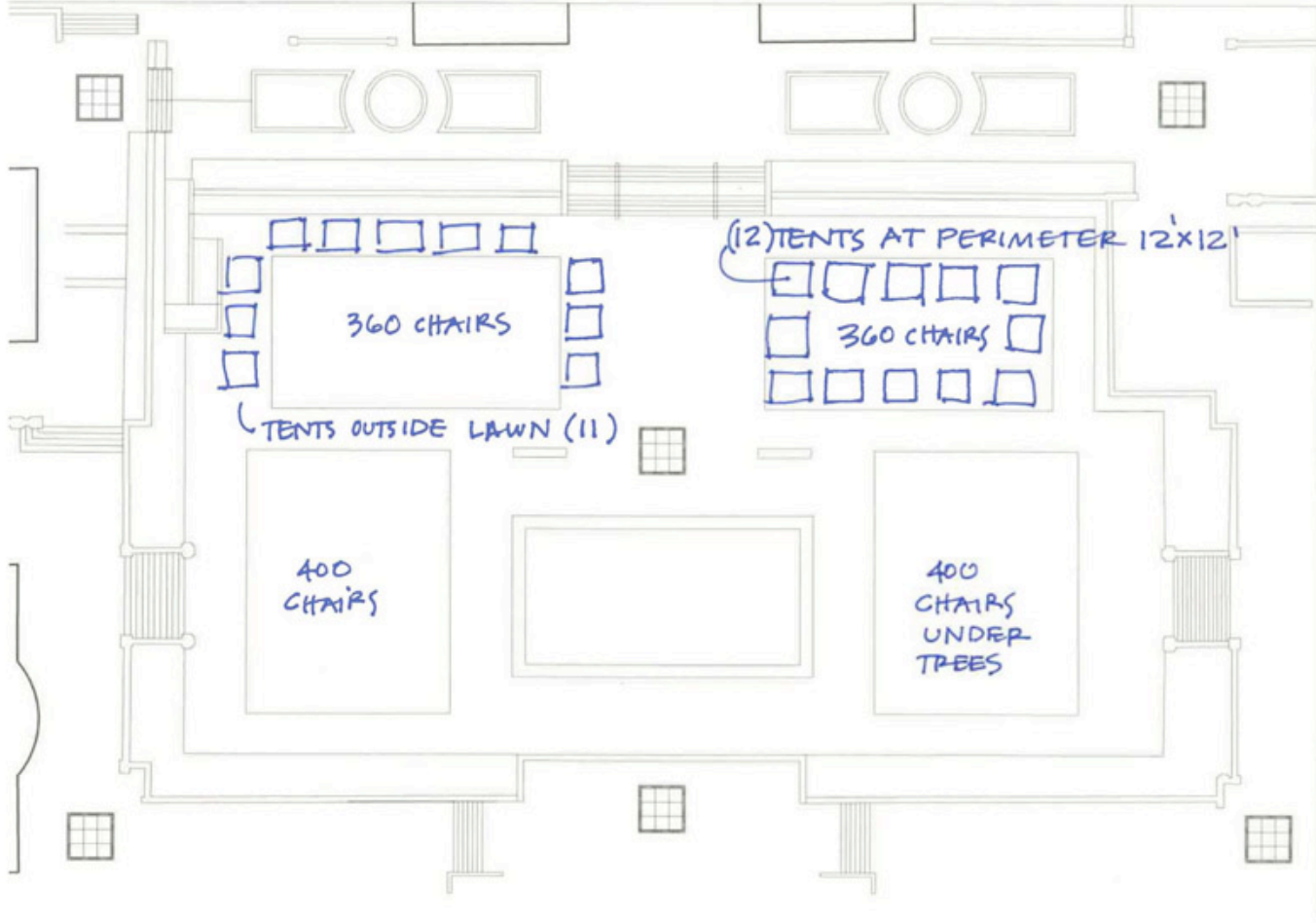
FREESTANDING ID SIGN
OPTION 1



THEMED LIGHT FIXTURES, PAVING AND BANNERS THROUGHOUT CORRIDOR



BUILDING LETTERS ON TRIANON





ARCHITECTURAL RESOURCES GROUP, INC.
Architects, Planners & Conservators



JONI L. JANECKI
& ASSOCIATES

JONI L. JANECKI & ASSOCIATES, INC.
515 BRUYER ST. SANTA CRUZ, CA 95060
PHONE 837.423.8040 | FAX 837.423.8041

PERSPECTIVE

De Anza Community College
21250 Stevens Creek Boulevard, Cupertino
July 22, 2010



ARCHITECTURAL RESOURCES GROUP, INC.
Architects, Planners & Conservators

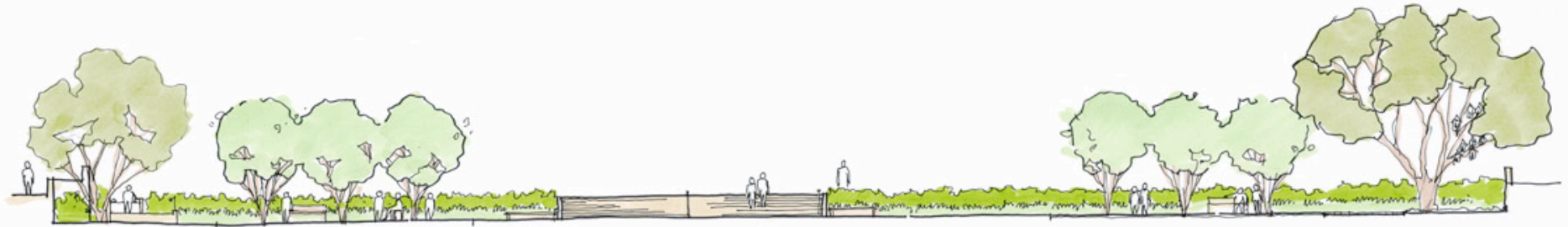
JONI L. JANECKI
& ASSOCIATES

JONI L. JANECKI & ASSOCIATES, INC.
518 BRUYER ST. SANTA CRUZ, CA 95060
PHONE 837-423-0040 | FAX 837-423-0881

TIMELINE WALL

De Anza Community College
21250 Stevens Creek Boulevard, Cupertino
July 22, 2010

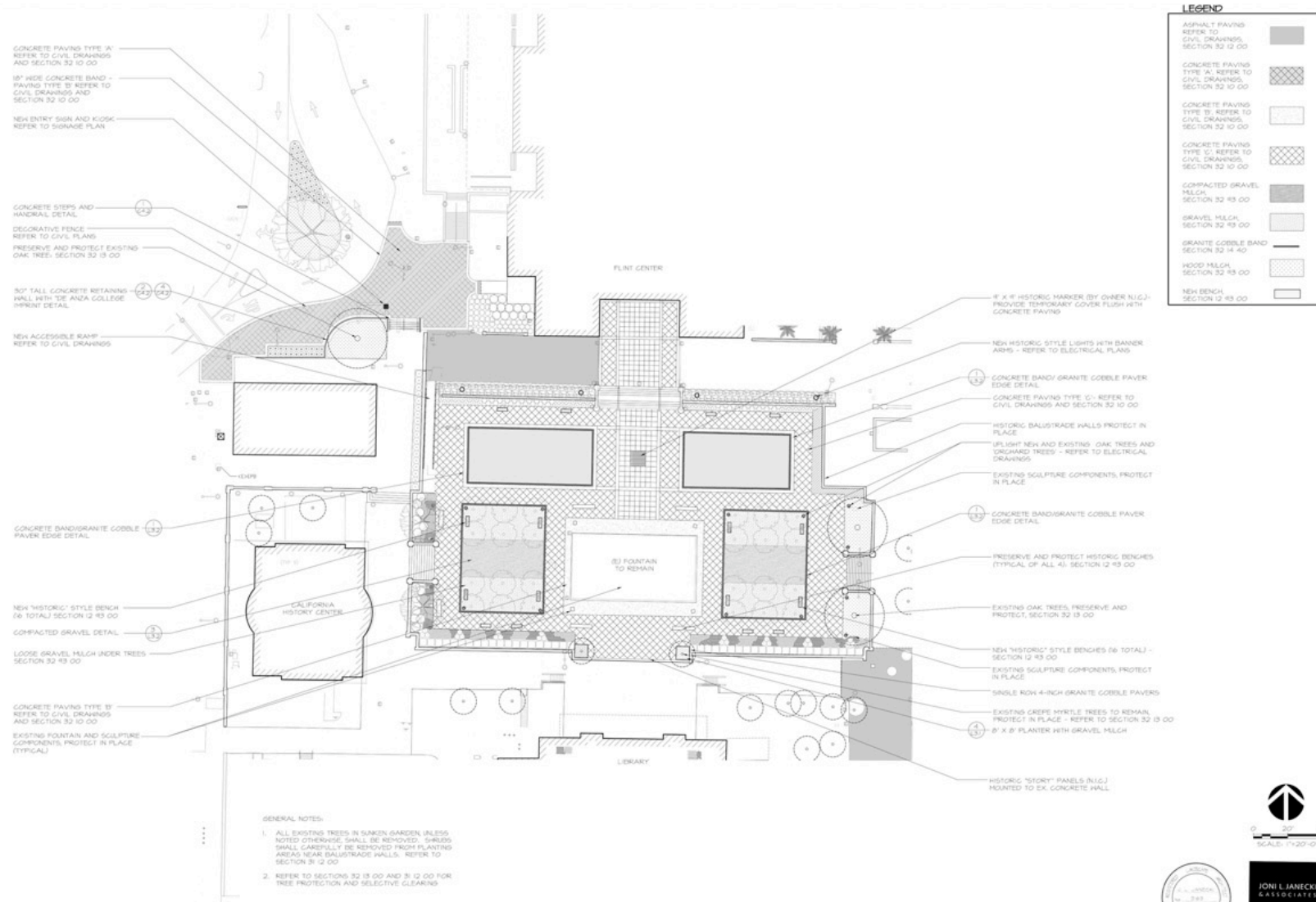
SECTION ELEVATION LOOKING NORTH



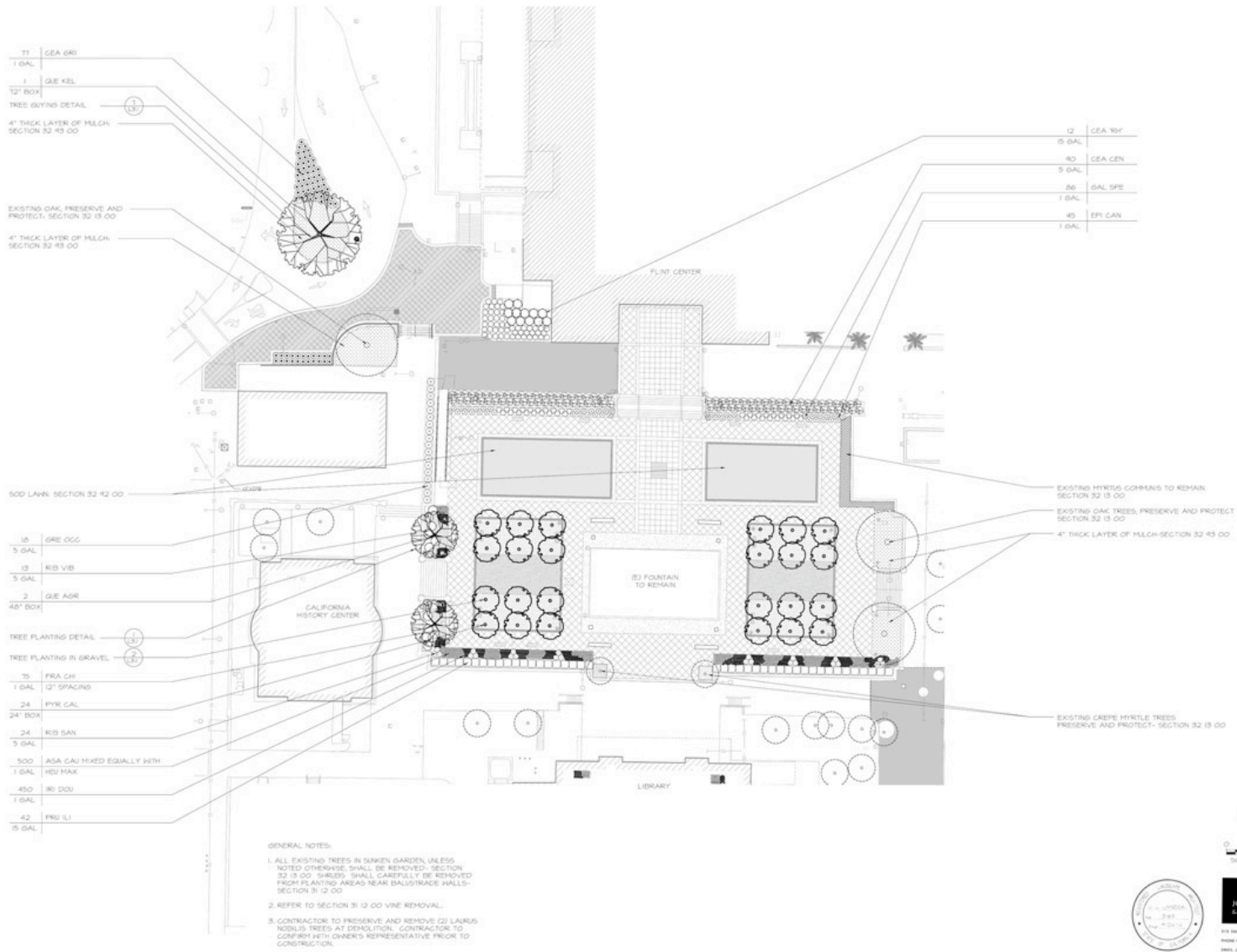
SECTION ELEVATION LOOKING WEST



95% CONSTRUCTION DOCUMENT - MATERIALS PLAN



95% CONSTRUCTION DOCUMENT - PLANTING PLAN



OAK UNDERSTORY

1. *Asarum caudatum*
(Wild Ginger)
2. *Fragaria chiloensis*
(Beach Strawberry)
3. *Heuchera maxima*
(Island Alum Root)
4. *Iris Douglasiana*
(Pacific Coast Iris)
5. *Ribes viburnifolium*
(Evergreen Currant)



FORMAL HEDGE

1. *Arctostaphylos densiflora* 'Howard McMinn'
(Manzanita)
2. *Cercocarpus betuloides*
(Mountain Mahogany)
3. *Prunus ilicifolia ilicifolia*
(Hollyleaf Cherry)
4. *Rhus ovata*
(Sugar Bush)



JONI L. JANECKI
& ASSOCIATES

JONI L. JANECKI & ASSOCIATES, INC.
515 SMITH ST. SANTA CRUZ, CA 95060
PHONE 831-423-6080 | FAX 831-423-6084

SUNKEN GARDEN
NATIVE PLANTING

De Anza Community College
21250 Stevens Creek Boulevard, Cupertino
January 7, 2011

SUNNY BORDER

1. *Ceanothus* sp.
(Wild Lilac)
2. *Galvezia speciosa* 'Firecracker'
(Island Bush Snapdragon)
3. *Grewia occidentalis*
(Lavender Starflower) **
4. *Mimulus aurantiacus*
(Sticky Monkey Flower)
5. *Myrtus communis*
(Myrtle) **Existing to Remain

** NON-NATIVE PLANT

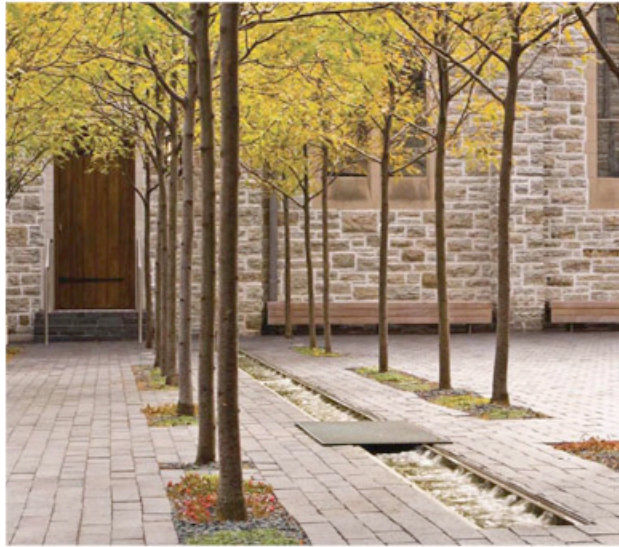


JONI L. JANECKI
& ASSOCIATES

JONI L. JANECKI & ASSOCIATES, INC.
315 SMIT ST. SANTA CRUZ, CA 95060
PHONE 831-423-8040 | FAX 831-423-8054

SUNKEN GARDEN
NATIVE PLANTINGS

De Anza Community College
21250 Stevens Creek Boulevard, Cupertino
January 7, 2011



JONI L. JANECKI
& ASSOCIATES
JONI L. JANECKI & ASSOCIATES, INC.
515 BRIFT ST. SANTA CRUZ, CA 95060
PHONE 831.422.6040 | FAX 831.422.6054

SUNKEN GARDEN

De Anza Community College
21250 Stevens Creek Boulevard, Cupertino
January 7, 2011

BENCHES:



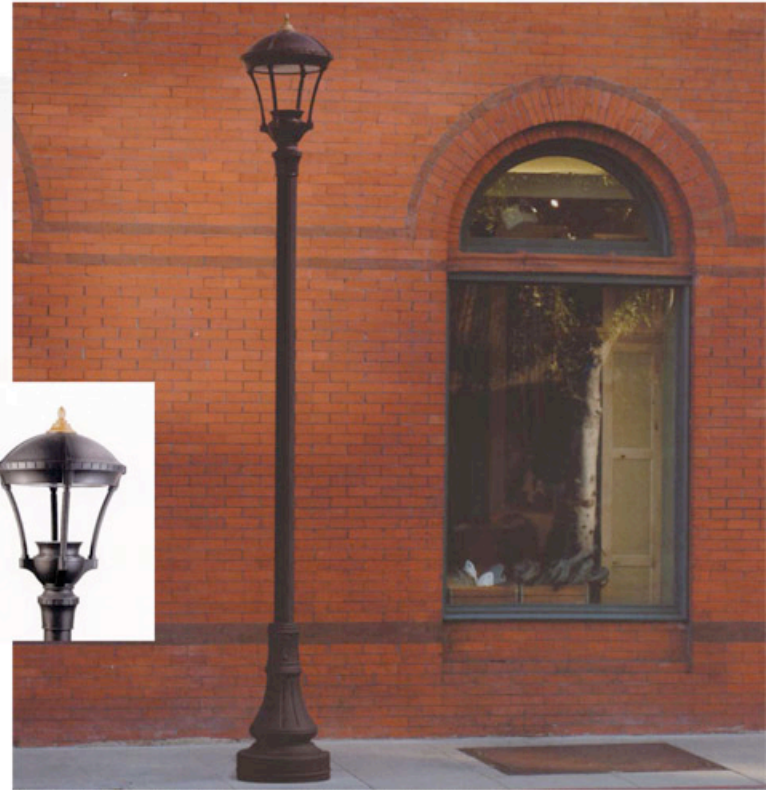
Plainwell Bench
Manufacturer: Landscape Forms



Existing Historic Site Bench



HISTORIC LIGHTING:



Providence INDA Light - 12' DB1 Pole with Banner Arm
Manufacturer: Architectural Area Lighting

JONI L. JANECKI
& ASSOCIATES

JONI L. JANECKI & ASSOCIATES, INC.
515 SHUTT ST. SANTA CRUZ, CA 95060
PHONE 831.423.8090 | FAX 831.423.8054

SUNKEN GARDEN
SITE FURNISHINGS

De Anza Community College
21250 Stevens Creek Boulevard, Cupertino
January 7, 2011



Brick and Concrete Pattern



Grey Concrete with Decorative Score Pattern and Brick Band



Compacted Gravel Paving



Brick and Concrete Pattern



Concrete and Decorative Band at Edge of Asphalt



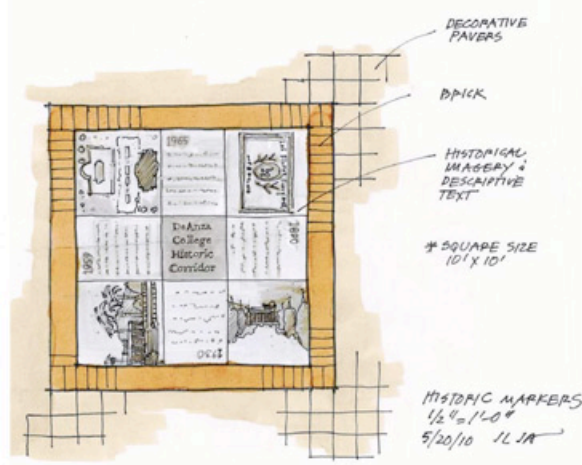
Compacted Gravel Paving

JONI L. JANECKI & ASSOCIATES
JONI L. JANECKI & ASSOCIATES, INC.
915 SWIFT ST. SANTA CRUZ, CA 95060
PHONE 831.423.8040 | FAX 831.423.8044

SUNKEN GARDEN PAVING CONCEPTS

De Anza Community College
21250 Stevens Creek Boulevard, Cupertino
January 7, 2011

HISTORIC MARKERS:



Future Concept for Historic Markers (N.I.C.)



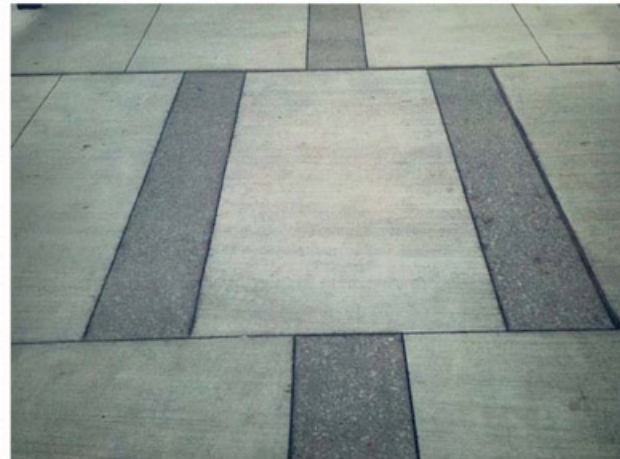
Pre-cast Concrete Pavers



Pre-cast Concrete Pavers



Grey Concrete and Exposed Aggregate Concrete



Grey Concrete and Colored Concrete with Sandblast Finish



Concrete Pavers with Exposed Aggregate Band

JONI L. JANECKI & ASSOCIATES
JONI L. JANECKI & ASSOCIATES, INC.
915 SHIFF ST. SANTA CRUZ, CA 95060
PHONE 831-423-8040 | FAX 831-423-8054

SUNKEN GARDEN
PAVING CONCEPTS

De Anza Community College
21250 Stevens Creek Boulevard, Cupertino
January 7, 2011



Recycled Granite Cobble Band



Recycled Granite Cobble Band - Mixed Materials



Recycled Granite Cobble Band

JONI L. JANECKI
& ASSOCIATES

JONI L. JANECKI & ASSOCIATES, INC.
575 SHUFF ST. SANTA CRUZ, CA 95060
PHONE 831.423.8040 | FAX 831.423.8054

SUNKEN GARDEN PAVING

De Anza Community College
21250 Stevens Creek Boulevard, Cupertino
January 7, 2011

SITE PLAN



SUNKEN GARDEN - DE ANZA COLLEGE

HISTORIC REVIEW COMMITTEE
MARCH 1, 2011