

Exercise # 5, p 11-13

The Bacterial Smear and the Simple Stain

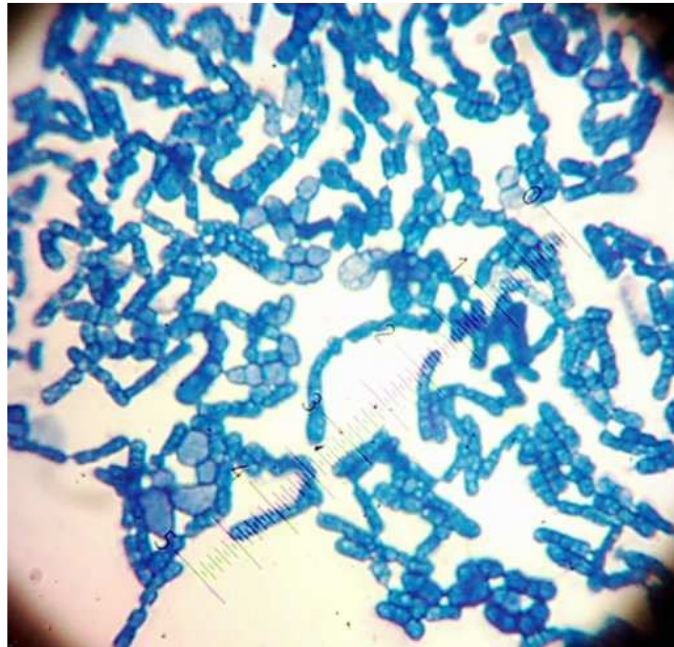
Additional references:

1. Textbook
 - a. Ch 3, p 69-71

2. Photo Atlas
 - a. Simple stain, p 27
 - b. Methylene blue stain, p 44

Terms:

Acidic stain
Aseptically
Basic (alkaline) stain
Bibulous paper
Broth culture
Chromophore
Cocci shaped bacteria
Cover slip
Differential stain
Heat fix
Incinerator
Methylene blue dye
Microscope slide
Oil immersion objective
Rod shaped bacteria
Simple stain
Simple staining technique
Slant culture
Smears
Structural stain



Bacteria	Notes on the bacteria
Cocci	
Rods	